

ARTISAN'S ALMANAC

Klamath Falls Arts District

**Linkville Playhouse
Turns 50**

**Art Meets
Commerce**

**15 Bands
for 15 Venues**

**2012
Issue #2
FREE**

A PROJECT OF
**CD THE CREATIVITY
COLLECTIVE**

Dynasty's RED DRAGON LOUNGE

Open Friday & Saturday, 8:30pm - Close



- Full Bar
- New Dance Floor
- Live DJ Music
- Oregon Lottery
- Smoking Patio
- Air Conditioned
- Free Food Delivery
- Until 9:30pm

\$25 Minimum Order



106 Main St. Klamath Falls, OR 97601 | (541) 850-6948

www.dynastyrestaurantklfalls.com

Come Dance The Night Away With Sunny



BY CHOICE HOTELS

\$69

for 1-2 p

+ tax *



100 Main St.
Klamath Falls, OR 97601
(541) 882-4666

- Free internet in public places
- Free hot breakfast
- TV with cable channels
- Pets allowed. Near downtown
- Safety deposit boxes available
- Meeting rooms & laundry facilities
- Outdoor heated pool and hot tub

* Must present this coupon to front desk. Offer not valid June 1st - Aug. 31st, '12. Not valid with other offers and during holidays. Redeem coupon at the Klamath Falls, OR locations only. Not valid at other locations. Expires 12-1-12.

75 Main St.
Klamath Falls, OR 97601
(541) 884-7735



BY CHOICE HOTELS

\$59

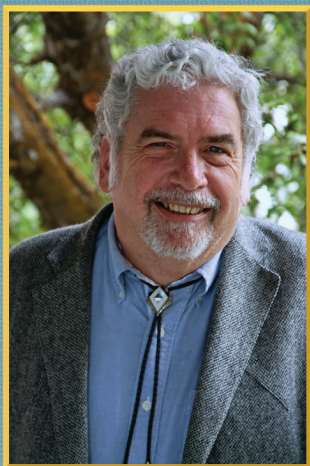
for 1-2 p

+ tax *

- Free high speed internet
- Free continental breakfast
- Pets allowed
- Walking distance from downtown



* Must present this coupon to front desk. Offer not valid June 1st - Aug. 31st, '12. Not valid with other offers and during holidays. Redeem coupon at the Klamath Falls, OR locations only. Not valid at other locations. Expires 12-1-12.



THE LAW OFFICE OF PHIL STUDENBERG

CRIMINAL & DUI/MARIJUANA DEFENSE

With over 30 years of criminal defense law practice, Mr. Studenberg and his staff work diligently to obtain justice for every individual client.

200 PINE ST. KLAMATH FALLS, OR 97601 | (541) 882-1426

WWW.PHILSTUDENBERG.COM

DISABILITY WITH DIGNITY

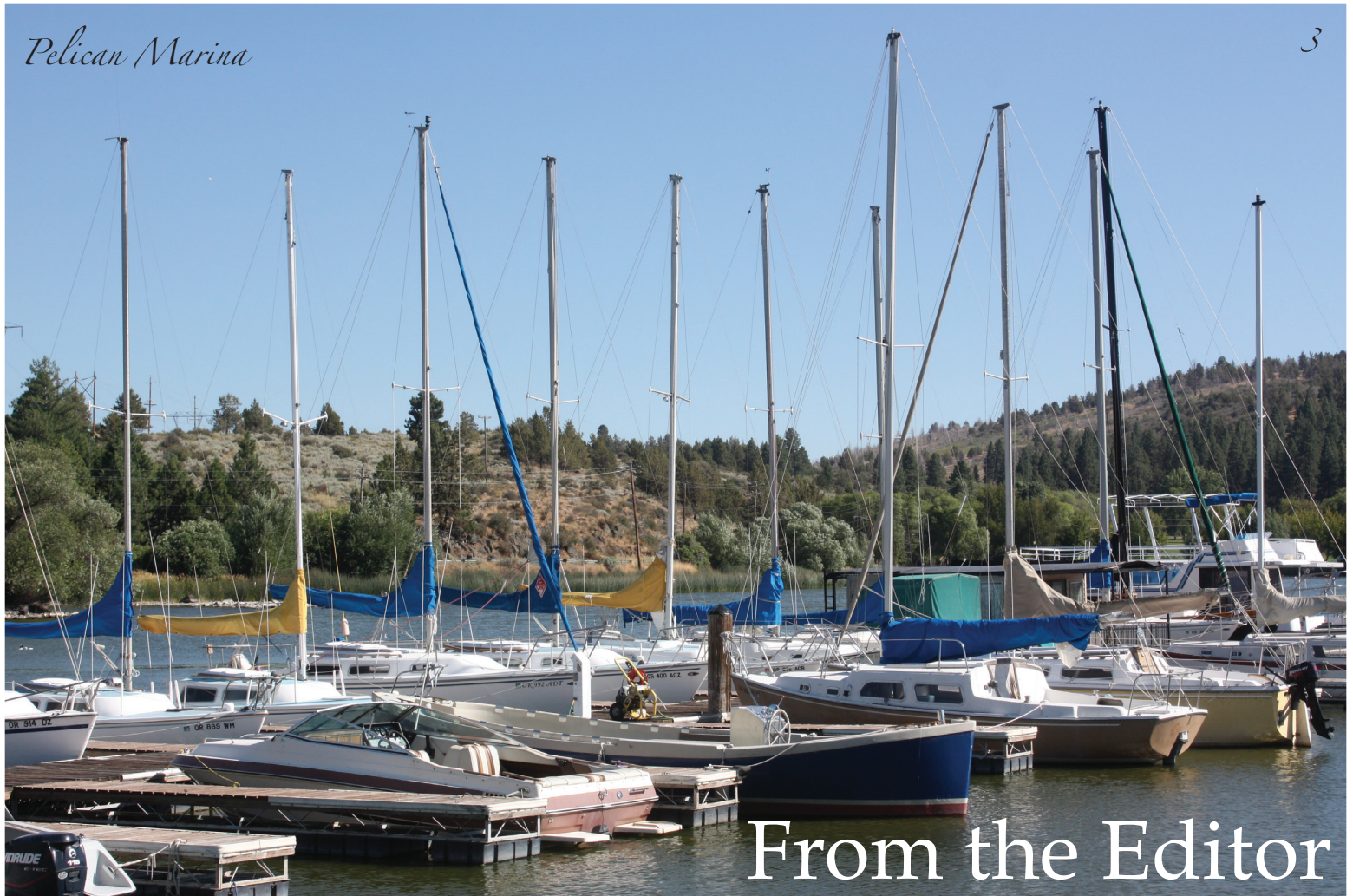
SOCIAL SECURITY/DISABILITY

At the Law Office of Phil Studenberg, we are dedicated to taking up the fight with the Social Security Administration on the behalf of those who need or have been denied their rightful disability benefits.

1017 N. RIVERSIDE DR. SUITE 108 MEDFORD OR, 97501 | (855) 349-8484

WWW.DISABILITYWITHDIGNITY.COM





From the Editor

Welcome to the 2nd annual Artisan's Almanac: an arts, entertainment and lifestyle resource guide for the Klamath-curious. Special thanks to The Klamath County Library, Old Town Pizza, Kiger Stadium, and Waldos for your partnering support in 2011.

The Creativity Collective would like to welcome new committee heads: Lisa, Nicole, Tara, Jacci, Cori, Eric and Coe. We look forward to the gift of your talents and enthusiasm! We've also had to say goodbye to four very special committee heads: Gina, Jessica, Taryn and Tanya. Tanya, with the help of her beau, Paul is working on expanding a Collective into Florence, OR. The area is very supporting of the arts

and a beautiful location for a coastal Collective. Lastly, I would like to thank our board of directors.

I look forward to expanding The Collective into New Orleans, LA. It will be an amazing thing to be able to bring the art communities of New Orleans, Florence and Klamath together in 2012.

As this magazine finds its way into the hands of other art communities, we hope that it sparks curiosity to come visit Klamath Falls and play . . . and if you really like it—stay.

Christy Soto



incense • hookah • shisha
scales • locally blown glass
smoking accessories

1040 E. Main St.
Klamath Falls, OR 97601
541.850.8556

Specializing in small lots of unfiltered, 100% varietal wines.
Just 16 beautiful miles from Klamath Falls, OR.
Give us a call, we'd love to share
our wine passion with you.

12 Ranch Wines

541-545-1204
4550 Burgdorf Rd. Bonanza, OR
www.12ranchwines.com

SALADS • SANDWICHES

501 Main St
Suite 101
Klamath Falls, OR
(541) 882-3671



*Where dreams
come true...*

**Main Street
Jewelers**

- ♦ engagement rings
- ♦ wedding sets
- ♦ men's wedding bands
- ♦ bride's pendants
- ♦ attendee gifts
- ♦ accessories

701 main street 3480 washburn way
541-884-1077 541-884-1076
www.MainStJewelers.com

Artist CD & CREATIVITY COLLECTIVE PRESENTS...

Open Mic Night



610 Main Street, Klamath Falls, OR

ARTIST OPEN MIC
Music, poetry, spoken word, and comedy at the Creativity Collective's Open Mic Nights at Waldo's.

Come on down to
610 Main to check it out!
doylefrench@gmail.com




- Heated Event Center
- 2 Exhibit Halls
- Heated Indoor Arena
- Outdoor Arena
- Covered Livestock Barns
- Enclosed Horse Stalls
- Outdoor Stage
- RV Parking
- 2000+ Parking Spaces
- Easy Access
- Minutes from Hwy 97
- Restaurant Access
- Hotels Across the Street
- Bus Pickup Nearby

**FISHER
NICHOLSON
REALTORS, LLC**

**Diana
Kellstrom**

*Real Estate Broker
Certified Distressed Property Expert*



Cell: 541.331.0218
Office: 541.884.1717
Toll Free: 800.460.8124

www.fnrhomes.com • diana.kellstrom@fnrhomes.com

Klamath Dance

Tap • Ballet • Jazz
Karate • Hip-Hop
Creative Movement



229 S. 6th St.
Klamath Falls, OR
(541) 884-1522

Ages 2 1/2 to adult welcome.

**FISHER
NICHOLSON
REALTORS, LLC**

**YOUR
"HOME" TEAM!**

403 Main St. Klamath Falls, OR
541-884-1717 | 1-800-460-8124
www.fnrhomes.com

Stop by and see our
historical photo
gallery!



3531 S. 6th St.
Klamath Falls, OR 97603
(541) 883-3796

www.kcfairgrounds.org



Entrance to Downtown

Table of Contents

Festivals of the Arts District	6
Welcome Service Interviews Paul Hillyer	9
15 Bands for 15 Venues	10
Art Meets Commerce with Fran Dearborn	12
The Value of an Arts District	14
Map of The Klamath Falls Arts District	16
Quality of Life for Our Veterans	18
Linkville Playhouse Turns 50	20
New Resident Resource Guide	22
Exploring the Outdoors in the Klamath Basin	24
Underwater Videography, the Art of Dan Benson	25
Field of Screams Recap	26



Intersection of the two Mains

EDITOR

Christy Soto

ASSISTANT EDITOR

Gina Vanderkooi

CREATIVE DIRECTOR

Mike Stier

CONTRIBUTING WRITERS

Christy Soto, Terra Whitlock, Nick Hill, Answer People, Klamath & Lake Community Action, Doyle French, Mary Theis, Katrina Burington

CONTRIBUTING PHOTOGRAPHERS

Christy Soto, Mike Stier, Jimmy Sandoval

ADVERTISING EXECUTIVES

Christy Soto, Mike Stier, Diana Kellstrom

Cover: Klamath Co. Museum exhibit creatively showcases items made from local timber

www.creativitycollective.com
www.facebook.com/artskitchen
www.twitter.com/arts_kitchen

THE OFFICIAL MAGAZINE OF THE:

Klamath
Welcome
Service



Dozens of business relationships must be replaced each time a family relocates. KWS gives businesses the opportunity to introduce themselves to families and professionals that have recently moved to the area.

www.creativitycollective.com/aroundtown.html

Printed in the USA
copyright © 2012; The Creativity Collective



Singing Bowls at Full Circle



Artventure Winner



Poi Spinning at Stukel Park



Coloring Sheets at Stukel Park



Artventure Winner



Water Balloon F
Veteran's P

Festivals of the Klamath Falls

by Christy Soto

The Klamath Falls Arts District boasts many festivals, each offering a different flavor and facet of Southern Oregon culture. Two events occur on a set schedule during the summer months: Third Thursday and Artventure.

The Downtown Association spearheads the **Third Thursday** evening events that run May to September. There have been record numbers in the second year and it is poised to grow larger in 2012. Although there is a more business-focused feel since the Association took it over from the Arts Council, it is still a multi-faceted event that offers a variety of live music, street-vendors, performances, and unique shopping opportunities.

A new art-focused family event that encompasses the entire Arts District is **Artventure**. This project of the Creativity Collective is a free treasure hunt and street

fair every second Saturday of the month.

The treasure hunt begins at the Children's Museum (711 East Main) at 11am and ends at Veterans Park at 3pm when the winner is announced from those who finished the route. Families pick up their Artvoucher treasure maps at the Children's Museum and set out to visit each of the participating locations for their stamp or sticker. The route consists of businesses that are open with free family activities and entertainment. This includes the Klamath County Museum, Cakery, Jump 'N' Jax, Astral Games, The Farmer's Market, Mark London Designs, Blue Dot Kids, Ross Ragland, Klamath County Library and more! Each location offers free activities that include:

- Cookie and cupcake decorating, Poetry and Pie
- Collage, marble art, coloring, sewing and other crafts
- Theater arts and activities
- Drumming, Hula hooping, Poi spinning
- Rock painting, Zen garden construction
- Face painting, mini manicures and finger-nail art
- Pin the tail on the Aartvark
- Oversized chess set, gallery exhibits and more

Completed Artvoucher treasure maps are put into a raffle for a treasure chest at the end of the day when it is raffled off to a winner. Artventure is sponsored by the Klamath County Tourism grant, City Parks, First Choice Property Management and Basin Transit Service.

The **Snowflake Festival** occurs during the first two weeks in December and offers over 20 separate events provided by area non-profits and businesses. The Snowflake Parade with over 100 floats, annual coloring and essay contest and brunch with Santa are all favorite activities for this winter gem.

Children's Museum

A place to explore and discover




Experimentation Stations
Toddler Discovery Area
Multimedia
World Travel
Our Town



Birthday Parties
Building Rentals

711 E. Main St. Klamath Falls, OR
www.cmkf.org • (541) 885-2995



Indigo Beads.

Largest Inventory in
Southern Oregon!

Designer Jewelry, Classes & Gifts
1500 square feet of fun!

611 Klamath Ave. Klamath Falls, OR
(541) 850-3855
www.indigobeads.com

SALES & RENTALS **KBS** **OPEN 7 DAYS A WEEK**

KLAMATH BOARD SPORTS

**316 S. 6th ST.
KLAMATH FALLS**

(541) 273-9KBS

SNOW - SKATE - WAKE



Balloon Fight at Veterans' Park

Face Painting at Gino's

Marble Art at the Children's Museum

Bead Making at Stukel Park

Paper Mache at Vets Park

Cupcake Decorating at Cakery

Arts District

Artventure Activities

The three-day Ross Ragland's **Taste of Klamath** provides the best of local cuisine in a celebratory setting. In addition to food and spirits, there is musical entertainment and a gallery opening during this event typically held in May.

The **Chamber of Commerce Street Fair** complements the Fourth of July festivities with a well-attended parade and events in Veterans' Park prior to the fireworks. "Our committee is also working on bringing together more activities for teens and young adults," adds Heather Tramp, Programs Marketing Coordinator for the Chamber.

Also in Veterans' Park is the Klamath Blues Society's **Blues Festival** with local and national blues acts and vendors, kids' activities, food and a beer-garden. This fundraiser occurs late summer.

Cinco de Mayo celebrates the rich Latin cultures of Southern Oregon with music, a parade and cuisine.

The **Kruise of Klamath** and the **Kinetic Challenge** usually share a weekend at the end of summer. The Kruise brings over 500 classic vehicles to this three-day event which is highlighted by the popular Show 'N' Shine, Cops & Robbers, Poker Run and a Sock Hop.

Another Arts District mainstay is the **Farmer's Market** every Saturday in summer. Over 30 vendors offer local fruits and vegetables, baked goods, chainmail, candles, crafts and more.

Info available online at individual websites and Facebook accounts.



Cakery featured in Taste of Klamath!

All your equipment & party needs under one roof!

Tables, chairs, tents, arbors, arches, flatware, glassware, barbecues, linens, napkins, buffet & catering supplies.



Mon - Fri: 7:30am - 5pm
(Party Time: 10am - 5pm)
Sat. in Winter: 8am - 1pm
Sat. in Summer: 8am - 4pm
Closed Sun.

24 hour emergency cell-phone
ALL Credit Cards Accepted

Hand & power tools. Concrete equipment. Hoists, lifts & scaffolding. Pressure & steam washers. Trucks & trailers.



5143 S. 6th St. Klamath Falls • 541-884-0114
powerpacrentals.com • partytimeenterprise@gmail.com

OPTILUX ADVERTISING

WEB & PRINT DESIGN • PHOTO & VIDEO



WWW.OPTILUXDESIGN.COM
504-957-5820 • 541-591-4295



Kruise of Klamath



Falls Arts District



Kinetic Challenge



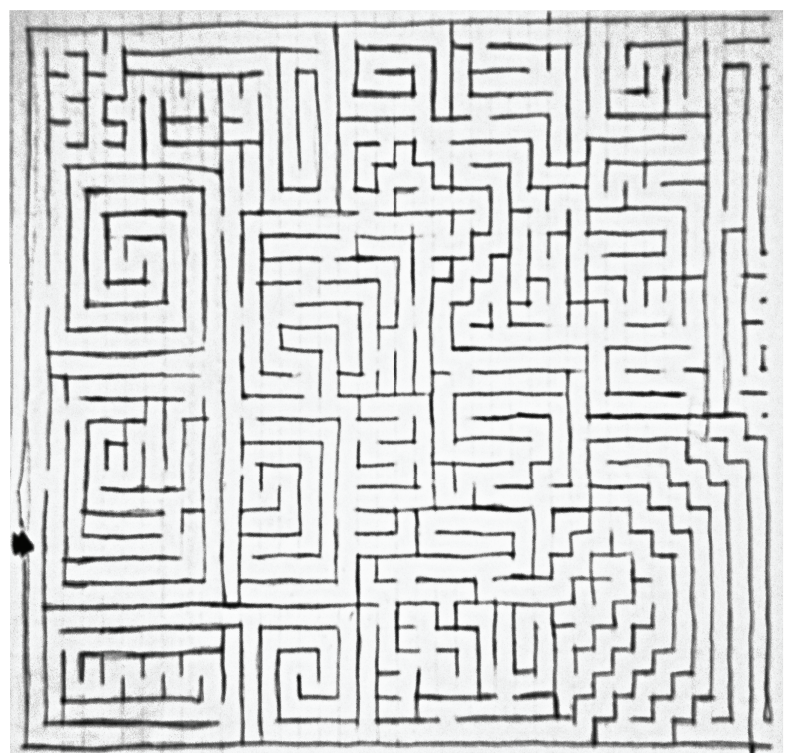
Snowflake Festival



They're Only
Young Once!

628 Main St. • 541-884-1525 •
bebebellaonline.com

Maze by Zoe Whitlock, age 14



**TREKKER
DESIGNS**

Garment Screen Printing
& Embroidery

1415 Main Street
(541) 884-5990

Quality Work, Quick
Turnaround, Competitive Prices

www.trekkerdesigns.com

HIDALGO'S
Authentic Mexican Food & Cocktails



Open for
Lunch, Dinner
and Drinks

541-850-8317
430 Main St. Klamath Falls, OR 97601



*Dr. Paul Hillyer
with his
Welcome Basket*

Surprises moving to K. Falls?

"A pleasant surprise is the quality and variety of eating establishments in town. This was a topic about which people laughed during my hiring process, so I did not have high expectations. It has been a treat to try out the cuisine in a number of excellent

eateries. Another surprise is the number of opportunities around this region for inexpensive natural recreation such a hiking, biking, cross-country ski-

ing, snowshoeing, bird watching and sightseeing. We have never lived in a place that contains such natural wonders and proximity to such unbelievable variety. Crater Lake, the Lava Beds National Monument, Lake of the Woods, and Upper Klamath Lake are early favorites.

Believe it or not, the weather has been a positive surprise. We find the climate here to be very mild – especially compared to mid-western states. What makes this climate so enjoyable is the dry air and the low winds. Other states, such as my wife's home state of Minnesota, are characterized by gale winds and high humidity. It seems to me that Klamath Falls' residents do not realize or appreciate how comfortable our climate is. One qualifier here: I wish Klamath had a spring!

The generosity of so many people and organizations in Klamath Falls has been gratifying. It is heartwarming to see local citizens stepping up and helping so many young people and their families. Perhaps this has been the most important surprise.

Finally, we have been very happy to find such a vibrant arts community in Klamath Falls. My family

and I are arts enthusiasts so it has been great to find the talent and rich arts culture that thrives locally. A man-made place that we enjoy is the Ross Ragland Theater. It is such a gift to have this source of entertainment in Klamath Falls.

Uniqueness of our school district and our youth

What makes our school district unique is

the commitment and dedication of our staff. We have many number of talented teachers that could have chosen to teach in many more wealthy areas. They did so not only because of the beautiful surroundings. Many have chosen to work here because they enjoy seeing the success of children for whom they are making a huge difference. A number are artists, many are outdoor enthusiasts, a good number are music lovers, and still others are travelers who have landed in Klamath Falls after early upbringings elsewhere. They form a great collage of experience and interests which make this group of adults a fun bunch with which to work.

Probably the trademark of our school system is the richness of our musical tradition. This was clearly seen last year when KU students finished number one at state in band, orchestra, and choir. To my knowledge, this trifecta has not been replicated by any other high school in the state. At a time of severe budget reductions, the Klamath Falls City Schools' Board of Directors has chosen to maintain their commitment to musical excellence.

A challenge is community/school communication. In a local survey we conducted in August, we found that almost 20% of our residents had so little knowledge about our schools that they could not rate their effectiveness. This is something I am really focusing on right now. It is critical that the people in Klamath Falls have a good understanding of our educational system.

As far as our students go, I think what makes so many of them unique is their goodness and respect. I am regularly in classrooms across the district, and it always impresses me how well behaved and positive our students are. Much of the credit for this should go to the leadership and staff in our buildings. Credit also goes to many superb parents in our district.

Another unique quality of so many students is their resilience. Many students face unimaginable challenges in their young lives. Despite obstacles I cannot even imagine, many children come to school eager to learn and to be a part of their school community."

Klamath Falls City Schools
www.edline.net/pages/klamathfalls
541-883-4700



Arts Education

- Artizen
541-273-6993
- Carla's the Dancer's Studio
541-883-3764
- Creativity Collective
541-281-4716
- Home Depot
541-884-0075
- Klamath Arts Association
541-883-1833
- Klamath Arts Council
541-883-2009
- Klamath Community College
541-882-3521
- Klamath County Library
541-882-8894
- Klamath Dance and Exercise
541-884-1522
- Michaels
541-850-5960
- Oregon Institute of Technology
541-885-1000



Ranch Espresso
541-273-1099
5416 Running Y Rd.
Klamath Falls, OR 97601
[FACEBOOK.COM/RANCHESSPRESSO](https://facebook.com/ranchesspresso)

Free Wi-Fi

- panini's
- espresso
- smoothies
- sandwiches
- italian sodas
- cinnamon rolls



15 BANDS FOR 15 VENUES

by Christy Soto

The Klamath Falls music ranges from the Celtic sounds of **Lads of Leisure** to the punk and metal bands that play to the under-21 crowds at venues like the **Shasta Grange** and **Yesterday's Plaza**. And just as many venues double as restaurants, clothing stores and multi-purpose facilities, band members themselves are day-time professionals: lawyers, contractors, architects and city employees. Many of these band members have been in multiple bands together, playing varying styles. Classic-rock and blues-influenced **Half Light Canyon's** Todd Kellstrom (bass, lead guitar, slide and vocals) and Bill Palmer (rhythm and vocals) have played together since they were 18. Many band members have played the circuit in bands assembled strictly for festivals. Klamath Falls transplants like Matt Stanbro, a programming student at OIT from Portland, found fellow musicians at the **Klamath Blues Society's Thursday night "Blues Jam."** "Klamath Falls has a tight-knit community of talented musicians thanks to the many open jam sessions which are held regularly," says Matt. He drummed on the stage of their 2011 Blues Festival and is now the drummer for the **58's**.

Whereas the **Ross Ragland** is a higher-end venue known more for bringing in well-known acts and bands, Klamath-born bands are chosen to play local events such as the Chamber of Commerce award gala. Venues can be rented by self-promoting acts. Of these bands, the young alternative bands of Klamath Falls are the most focused. One band, **Boot Black Sinners**, is a returning act at **Waldo's Bar** with originals and crowd-loving cover songs. Cover-songs draw the masses to **Busy Bee**, **Aftershock** and Gino's new bar, the **G-Spot**. "There's nothing like playing live music at one of the larger venues -- **Mia and Pia's** or **The Creamery**, especially when we get the crowd singing with us," says Frank Hernandez of **Lads of Leisure**. "It's noisy and boisterous. We recently played a Christmas gig at **MC's on Main**. I think that will soon become a good venue too."

Smaller, more intimate coffee-house venues such as **Leap of Taste** and **Matteo's** are all-ages locations. Still, Klamath Falls' favorite place to experience music is in our parks during a variety of festivals that are family-friendly even with an occasional beer garden. For those looking to connect with potential band-mates, **Masterworks Piano** on Main St. and **Denham Music** on South 6th have areas in-store for posting want-ads for band members. Craigslist is also a great place to post a "call for talent" as well as a place to advertise your band's availability for gigs.



Venues

Aftershock
(541) 273-0700

American Legion
(541) 882-0475

Busy Bee
(541) 273-2270

The Creamery
(541) 273-5223

Gino's G-SPOT
(541) 884-6474

County Fairgrounds
(541) 883-3796

VFW
(541) 882-0057

Leap of Taste
(541) 850-9414

Matteo's
(541) 273-0715

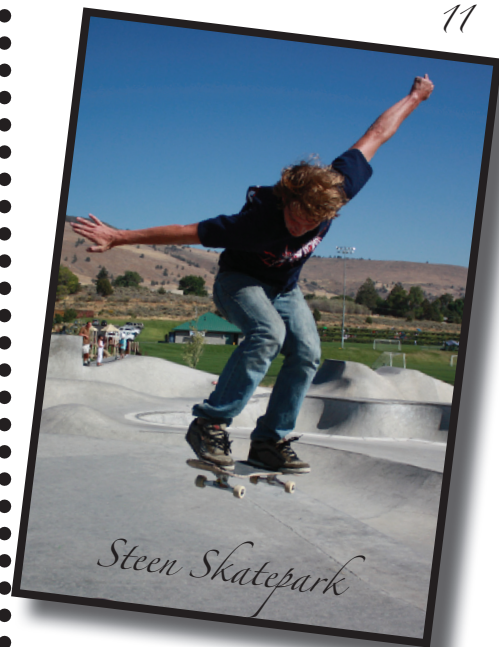
Mia and Pia's
(541) 884-4880

MC's on Main
541-882-3060

Ross Ragland
(541) 884-0651

Waldo's
(541) 884-6863

Yesterday's Plaza
(541) 882-8543



Teen Favorites

Astral Games.....(541) 882-3030

Epicenter.....(541) 273-0700

Steen Sports Park.....(541) 850-9571

4-H.....(541) 883-7131

Klamath Family YMCA.....(541) 884-4149

Kl. Youth Development Center... (541) 883-1030

Integral Youth Services.....(541) 850-7596

Music is a wonderful outlet for the youth of Klamath Falls. Steve Ayola, guitar and keyboardist for the rock/funk band--**Nephilim**--and also the sound engineer for the Ross Ragland, urges young enthusiasts to grow a diversity in style, ability and instruments. Learn to read music and have a good attitude. "The expansion of your abilities only increases the fun...Learn from everybody." High schools offer expanded band and choir programs. EagleRidge High School offers "Rock Band" class where teens learn classic rock and radio hits. The band even plays gigs.

Without community support, venues are less likely to continue to pay bands. "Most everyone has a limited amount of extra spending money right now, so it is a challenge to convince them to want to spend their time listening to live music," says 58's front-man Robert Harlow, "Patrons are appreciated more than ever."

Joe Hamilton started booking shows with local bands in 2004. By July of 2008, he was working with signed bands and labels. He has brought over 70 bands to Klamath Falls. "I love bringing music to the Klamath

Basin for the kids. I book death-core/hardcore. I've been told (by record labels) that I'm one of the most dedicated promoters they met in the states.

Lads of Leisure (541-892-3909), Half Light Canyon (541-891-4214), Boot Black Sinners (541-331-4072), Nephilim (541-205-3834), 58's (541-892-4275), 8th Street (541-281-5197) Joe Hamilton (541 892 4839)



Locally Crafted Drums

Large Musical Selection • All Genres

Professional Sound & Lights

Competitive Rates

serving southern Oregon for 2 decades

M. Shabbir
"DJ Sam"
(541) 892-6874
aftershockent@hotmail.com

AFTERSHOCK
ENTERTAINMENT

Weddings
Reunions
Birthdays
Anniversaries
Christmas Parties
Corporate
School Dances
Night Clubs
Theme Events



*Dining Room of Gino's
(r) Original Artwork by Fran Dearborn
(bl) Fran and son, Angelo*

When Art Meets Comm

Innovative Women Interviews Fran Dearborn

Gino's Cafe and Market owner and visual artist, Fran Dearborn has been drawing since youth. As a student of Sacred Heart High School, her favorite teacher, Sister Rose Claire, encouraged Fran to engage in an extensive art curriculum. At Oregon State University, Fran minored in art. Her early art was coastal landscapes. "I have always been a verbal story teller and I feel that I have utilized that skill on my canvases," remarks Fran. "I want to create a story that touches people, reminds them of the past and portrays images of family and social gatherings that are the threads of community life."

Fran's paintings and family memorabilia decorate Gino's walls. Every room has a special feeling of fun, comfort and uniqueness that only comes with an artistic touch. "My husband Hank always said that I have a knack for turning everything into an art project. I'm sure it's true. I love art so much that it does rise to the surface."



Fran's father, Elmer Belcastro, and his brothers owned Medo-Bel Creamery for 30 years. "He was a strong business man and knew the value of his customers and what direction he wanted to go." Fran helped with

administration and advertising. She painted signs and did ad layout. "Being a woman in business hasn't always been accepted as it is today. Most women don't get to actually run a business. The challenge has been frustrating and rewarding."

Being a neighborhood joint, they have seen kids grow up and return with their families. "Many dates, proms, and engagements have happened within these walls. After 25 years there are so many stories that we could write a book"

"My son Angelo has been a great addition to our business. He works hard and has interesting and creative ideas." Angelo modernized the business by introducing Point of Sale systems, creating the web-site and Facebook page, and creating on-line ordering and a way for customers to text food orders.

"Our relationship is strong and we have a mutual bond of family, friends and interest in the success of Gino's. The challenges of running a family business is that someone is always working. The perks are we get to hang out and enjoy each others personalities."

The store/restaurant has grown to include a full-service sports bar with a unique name. The nickname came from a friend of Angelo who sent a text invite to their friends and shortened Gino's Bar to the G-Spot. "The G-Spot - Come if you can find it!"

 **Innovative Women**





13

KU STORIES
documentary tells the vibrant history of Klamath Union High School with the stories & photos of its alumni & faculty

DVD available for purchase at:
creativitycollective.com/store

Supporting Arts & Entertainment
in Klamath Falls!

Emmett's
AUTO REPAIR
CENTER, INC.

Check us out online!
www.emmettsautorepair.com

- Fleet maintenance provided
- Quality parts
- Shuttle service
- Itemized invoices
- Secure fenced facility
- Nationwide guarantee
- Accept Visa, MC & Discover

ASE
CERTIFIED

AAA
Approved

NTS
AUTO CARE
CENTER

3515 Washburn Way
Klamath Falls, OR 97603
P: (541) 884-6567 • (541) 884-1657 • F: (541) 884-9101

FIRESERVE
Broadband Internet

FireServe offers 100Mbps ultra broadband services in Klamath Falls and basin for as low as \$20/ month.

nobody else comes close!

Give us a call at 541-273-4808

900 Main St. Suite B
Klamath Falls, OR 97601
(Corner of 9th & Main Downtown)

Hours: 9AM to 5PM Mon-Fri
(541) 273-4808 • sales@fireserve.net
check us out online: www.fireserve.net



The Value of an Arts District

It is Saturday night in Klamath Falls and the air is crisp. Main Street, the one-way thoroughfare through downtown is lined with parked SUVs and compact cars. Shining a light over the numbered side-streets, the Ross Ragland Theater seats patrons for a hit musical while the Klamath County Library wraps up a gallery opening featuring a local poet.

The bars bubble with OIT college students and local twenty-somethings getting a drink before heading to opening night at the Linkville Playhouse. El Palacio's karaoke is in full-swing--standing-room only until later in the evening when their upstairs nightclub picks up. It seems like any other weekend. Young and old converge on the sidewalks for a cigarette as a group of teenagers blast by on their skateboards. This is the cultural arts hub of a city of nearly 50,000 that boasts theatrical venues, museums, galleries, bars, coffee-houses, parks, and restaurants.

It isn't just a place for night-life, though. The Arts District has a family-friendly side. Artizen, an art supply store run by owner Tricia Rey, holds classes on the use of pastels and anime. On Klamath Avenue, Indigo Beads offers a store bursting with eye-candy that could make anyone take up beading. However Klamath Falls residents may choose to express themselves artistically--from tattooing and piercing to quilting and tap-dancing--it is available here.

Efforts have been spearheaded by a local arts non-profit to shine a light on the pre-existing Creative Arts District of Klamath Falls has been underway for nearly a year. The dialogue will explore the benefits of establishing the area between the Chamber of Commerce and the Children's Museum as an Arts District.

Wikipedia defines an Arts District as a "demarcated urban area, usually on the periphery of a city center, intended to create a 'critical mass' of places of cultural consumption such as art galleries, dance clubs, theaters, art cinemas, music venues and public squares for performances. Such an area is usually encouraged by public

NEXT OF KILN

Tues : 11am - 6pm
Wed : 11am - 8pm
Thur : 11am - 8pm
Fri : 11am - 8pm
Sat : 11am - 6pm
Sun : 11am - 4pm

**Classes
Gifts &
More**

719 Main St.
Klamath Falls, OR
541-885-5568



Networking C

- American Legion
- Answer People
- Assistance League
- Chamber Ambassadors
- Creativity Collective
- Elks
- Kiwanas

policy-making and planning, but sometimes occurs spontaneously."

Marketing the area as an Arts District will highlight the vibrant arts community that exists in Klamath Falls. It will also promote art-specific tourism by presenting the area as an arts destination. It may also stimulate youth and vitality by attaching the attractive "art district" concept to downtown. It also has the power to retain and attract creative professionals to Klamath Falls.

Efforts spearheaded by DURAC (Downtown Urban Redevelopment Advisory Committee) have addressed the issues of the empty second and third floors of the historic downtown buildings. An arts district marketing campaign could encourage the usage of the second floor commercial property as apartments and lofts. It could additionally encourage the usage of commercial warehouses on Spring Street. "The Spring St. commercial section [has] beautiful and interesting old buildings, businesses, and a direct connection to downtown," says Jennifer Woodward, registrar for EagleRidge High School. "This street has an excellent opportunity for an arts district - galleries, artisan foods, shops, music and more - while maintaining support for the existing businesses and the history of the area."

In much the same way the co-op advertising generated by the Downtown Association has increased traffic and customers to existing downtown businesses, an Arts District concentration of efforts could promote the arts that are hindered by low advertising budgets. This could also incubate diversification of the economy with new businesses. Currently, our Klamath Falls Arts District includes venues, resources, exhibits, arts education, non-profits, projects, attractions, and associate businesses.

The Creativity Collective has created a logo and secured domain names that are pointed temporarily to their website at www.creativeartsdistrict.com. The Collective's monthly event to spotlight the assets of the Arts District is Artventure. The interactive art walk and treasure hunt has rallied the support for this concept. The forward motion of the campaign will be to increase local support and build additional promo materials to grow out-of-area interest in the Klamath Falls Arts District. **For more info contact Christy Soto at 504-957-5820**



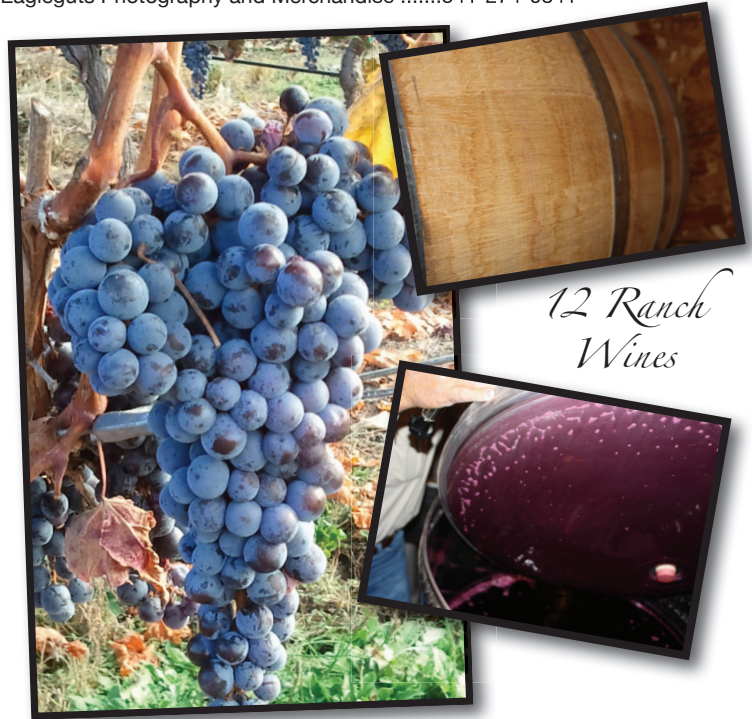
King Groups

- Lions
- Leatherneck Club
- Moose
- Sunrise Rotary
- Rotary Club of Klamath
- Soroptimist
- Shriners
- Veterans of Foreign Wars

Locally Produced

15

12 Ranch Wines	541-545-1204
My Simple Pleasures Soaps	541-892-1351
Adam's Produce	916-622-8615
Green Blade Bakery	541-273-8999
Cakery	541-205-3944
Charlie's Chaincraft	541-273-1102
EagleGuts Photography and Merchandise	541-274-0841



12 Ranch Wines



Le' Bella
Boutique Salon

541-884-6463
4812 S. 6th St
Klamath Falls, OR 97603
www.lebellaboutiquesalon.com

Hair Design • Nail Services • Hair Removal



1 Chamber of Commerce
205 Riverside Dr.
(541) 884-5193

2. Klamath Art Association
120 Riverside Dr.
(541) 883-1833

3. Favell Museum
125 W. Main St.
(541) 882-9996

4. Baldwin Museum
31 Main St.
(541) 883-4207

5. Veterans Park (pg: 18)
George Nurse Way
(541) 883-5351

6. Econolodge (pg: 2)
75 Main St.
(541) 884-7735

7. Dynasty Rest. & Lounge (pg: 2)
106 Main St.
(541) 850-6948

8. Quality Inn (pg: 2)
100 Main St.
(541) 882-4666

9. Office of Phil Studenberg (pg: 2)
200 Pine St.
(541) 882-8894

10. The Linkville Playhouse
729 Main St.
(541) 884-6782

11. Klamath County Library (pg: 21)
126 S. 3rd St.
(541) 882-8894

12. Citizen's for Safe Schools
403 Pine St.
(541) 882-3198

13. Veteran's Services
123 N. 4th St.
541-883-4274

14. Don & Sharrol Romano (pg: 26)
403 Main St.
(541) 891-7000

15. Fisher Nicholson Realtors (pg: 4)
403 Main St.
(541) 884-1717

16. Basin Mediactive (92.5, 99.5, 1150, 960)
404 Main St.
(541)-882-8833

17. Hídalgos Mexican Rest. (pg: 8)
430 Main St.
(541) 850-8317

18. Leo's Camera Shop (pg: 18)
437 Main St.
(541) 882-3331

19. City Parks (pg: 18)
226 S. 5th St.
(541) 883-5351

20. Mermaid Gardens (pg: 2)
501 Main St.
(541) 882-3671

21. Veterans Foreign Wars
515 Klamath Ave.
(541) 882-0057

22. Klamath Boards Sports (pg: 6)
316 S. 6th St.
(541) 273-9527

23. El Palacio
228 N. 8th St.
(541) 882-0475

24. Linkville Coins & Antiques (pg: 18)
131 Main St.
(541) 850-4464

24. Klamath Dance & Excercise (pg: 4)
229 S. 6th St.
(541) 884-1522

26. MC's on Main St.
617 Main St.
(541) 882-3060

27. Waldo's Bar and Grill
617 Main St.
(541) 882-3060

28. Rachel's School of Dance
638 Klamath Ave.
(541) 273-6130

29. Indigo Beads (pg: 6)
611 Klamath Ave.
(541) 850-3855

30. Vallejo's Photogr
623 Main St.
(541) 882-7

31. Bebe Bella (pg: 8)
628 Main St.
(541) 884-

32. KOB! TV
617 Main St.
(541) 882-3

33. The Ross Raglan
218 N. 7th St.
(541) 884-0

34. Main St. Jewele
701 Main St.
(541) 884-

35. American Legior
228 N. 8th St.
(541) 882-0

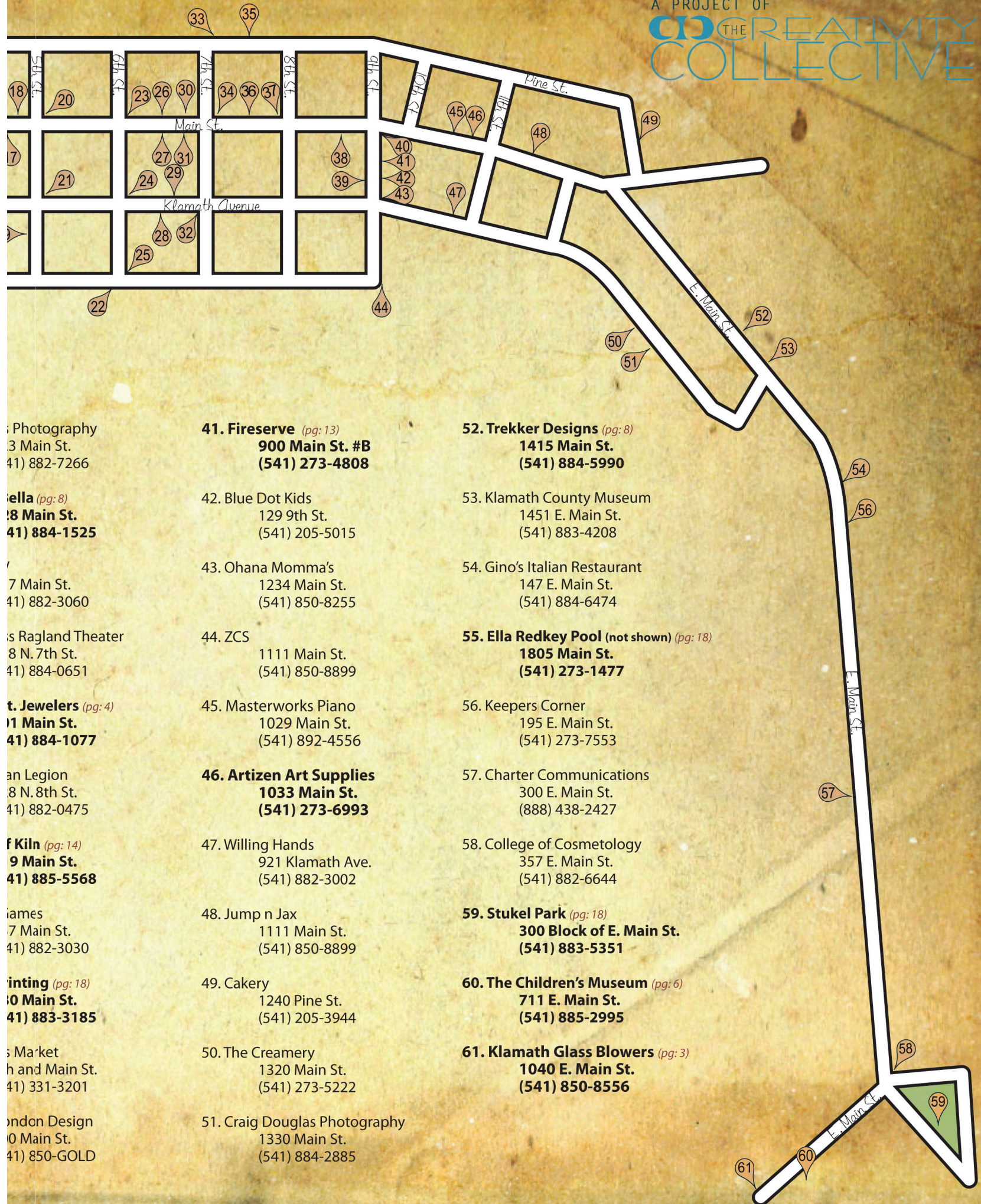
36. Next of Kiln (pg: 1)
719 Main St.
(541) 885-

37. Astral Games
737 Main St.
(541) 882-3

38. BRD Printing (pg: 1)
830 Main St.
(541) 883-

39. Farmers Market
9th and Ma
(541) 331-3

40. Mark London De
900 Main St.
(541) 850-C



Photography
 3 Main St.
 (541) 882-7266

ella (pg: 8)
 8 Main St.
 (541) 884-1525

7 Main St.
 (541) 882-3060

s Ragland Theater
 8 N. 7th St.
 (541) 884-0651

t. Jewelers (pg: 4)
 11 Main St.
 (541) 884-1077

an Legion
 8 N. 8th St.
 (541) 882-0475

f Kiln (pg: 14)
 9 Main St.
 (541) 885-5568

James
 7 Main St.
 (541) 882-3030

inting (pg: 18)
 10 Main St.
 (541) 883-3185

s Market
 h and Main St.
 (541) 331-3201

ndon Design
 10 Main St.
 (541) 850-GOLD

41. Fireserve (pg: 13)
 900 Main St. #B
 (541) 273-4808

42. Blue Dot Kids
 129 9th St.
 (541) 205-5015

43. Ohana Momma's
 1234 Main St.
 (541) 850-8255

44. ZCS
 1111 Main St.
 (541) 850-8899

45. Masterworks Piano
 1029 Main St.
 (541) 892-4556

46. Artizen Art Supplies
 1033 Main St.
 (541) 273-6993

47. Willing Hands
 921 Klamath Ave.
 (541) 882-3002

48. Jump n Jax
 1111 Main St.
 (541) 850-8899

49. Cakery
 1240 Pine St.
 (541) 205-3944

50. The Creamery
 1320 Main St.
 (541) 273-5222

51. Craig Douglas Photography
 1330 Main St.
 (541) 884-2885

52. Trekker Designs (pg: 8)
 1415 Main St.
 (541) 884-5990

53. Klamath County Museum
 1451 E. Main St.
 (541) 883-4208

54. Gino's Italian Restaurant
 147 E. Main St.
 (541) 884-6474

55. Ella Redkey Pool (not shown) (pg: 18)
 1805 Main St.
 (541) 273-1477

56. Keepers Corner
 195 E. Main St.
 (541) 273-7553

57. Charter Communications
 300 E. Main St.
 (888) 438-2427

58. College of Cosmetology
 357 E. Main St.
 (541) 882-6644

59. Stukel Park (pg: 18)
 300 Block of E. Main St.
 (541) 883-5351

60. The Children's Museum (pg: 6)
 711 E. Main St.
 (541) 885-2995

61. Klamath Glass Blowers (pg: 3)
 1040 E. Main St.
 (541) 850-8556

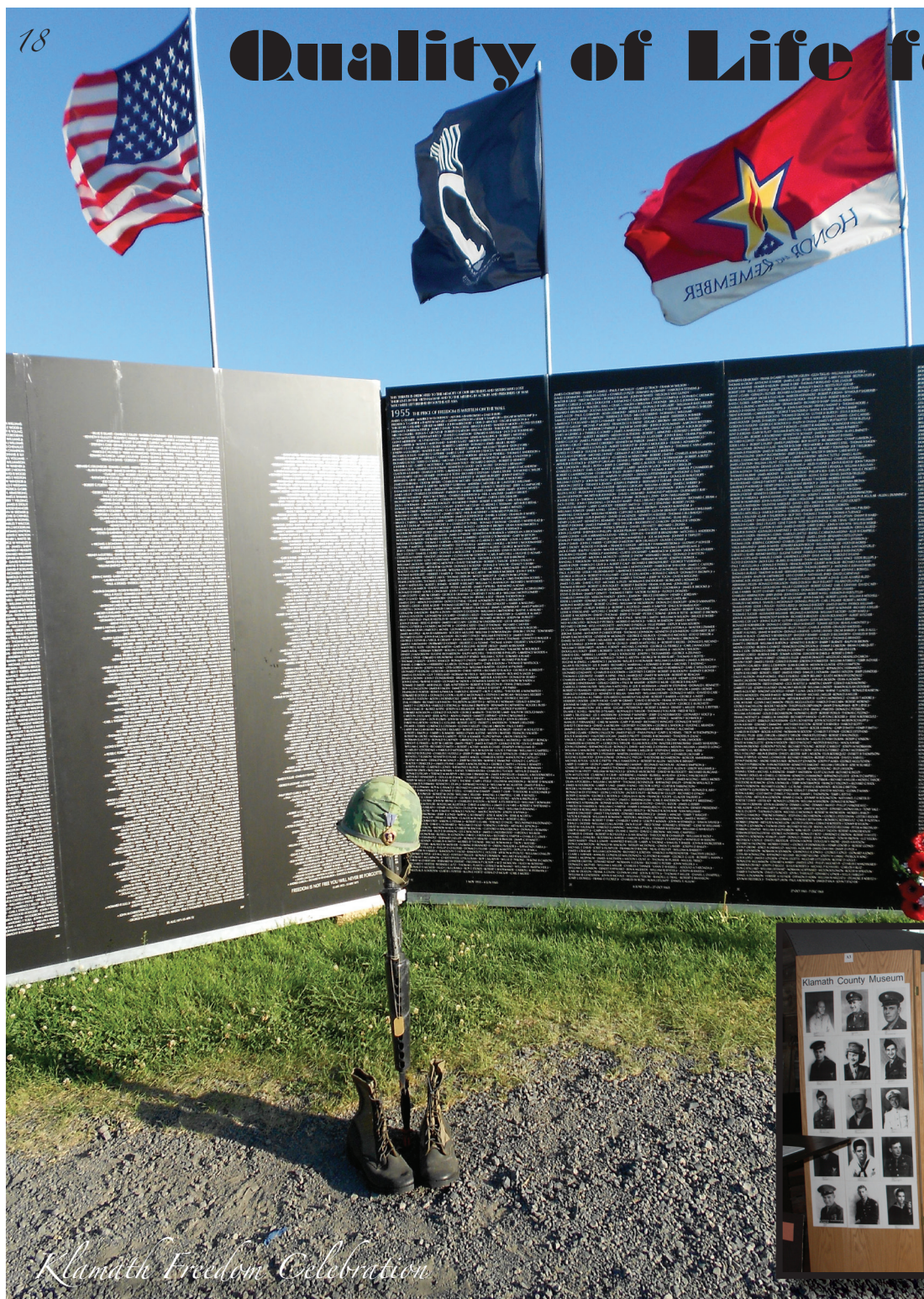
Quality of Life for our Vets

by Christy Soto

Klamath County boasts the highest number of Veterans in Oregon, making it a place rich with military history, resources and veteran honoring events.

Many events throughout the year honor our veterans while educating the public on the value of their contribution and their challenges reintegrating into society. **Veterans Day, Memorial Day and Fourth of July** have parades. **The Freedom Celebration** occurs June 28 – July 1st. Events include a Crater Lake/Vietnam Poker Run, live music by the *Lieutenant Dan Band*, Cost of Freedom Rodeo and more.

Several memorials to fallen soldiers and surviving veterans can be found in Klamath Falls at the **Klamath Co. Museum, Marine Barracks Memorial, Vets Memorial, Memorial Cemetery, Klam-**



Linkville
COINS & ANTIQUES
Bob & Gayle Busby
541-850-4464

Klamath Falls' best full service coin shop offering foreign and domestic coins for beginning to advanced collectors!

We also **buy & sell** foreign & domestic currency, trade tokens, gold & silver bullion, jewelry, post cards, native american artifacts, military collectibles, old bottles & other interesting memorabilia.

131 S. 6th St. • Klamath Falls, OR 97601
Corner of 6th & Klamath Ave.
tokenbob@aol.com • www.linkvillecoins.com

CITY OF Klamath Falls
Klamath Falls' **CITY PARKS**
(541) 883-5351

Neighborhood & Regional Parks, Geothermal Swimming Pool, Baseball Stadium, Marinas & MORE!

online: www.ci.klamath-falls.or.us
email: cityparks@ci.klamath-falls.or.us

Photography Inspired

LEO'S
CAMERA SHOP
SINCE 1953

Corner of 5th & Main Street
Downtown Klamath Falls
www.LeosCameraShop.com
541-882-3331

Serving Klamath Falls for 26 years & Veteran owned.

BBQ Printing
collectibles

830 Main St.
Klamath Falls, OR 97601
(541) 883-3185
9-5 Monday - Friday

eterans

ath Co. Court-house Memorial Shaft and Mitchell Monument (where the only attack and casualties on the continental U.S. occurred). The **Legacy of Bravery Memorial Tours** is a van tour that showcases the history of each destination as told through pre-recorded stories and music. This project of The Creativity Collective is partially funded by the Klamath Co. Transient Room Tax Grant. Additionally, the senior center, American Legion, VFW and other venues provide dancing, bingo and live music.

In addition to entertainment, Klamath Falls provides many resources for their Veterans. OIT and KCC offer veterans groups that support student, staff, or faculty veterans: "building friendships and partnerships that are based on the same honor, duty, loyalty, and selfless service instilled in all veterans," according to the OIT website. There is a link to **The Fort Oregon Project** which helps to put U.S. veterans in touch with people in their community to aid them with issues with assimilating back into civilian life.

The **Veterans Court of Klamath Falls** provides additional assistance for vets. "This program is remediative for the vet presenting with substance abuse, physical health (e.g. Traumatic Brain Injury) and/or mental health (e.g. PTSD) problems contributing to the commission of a criminal offense," says Steve Tillson, Treatment Court Coordinator. "It is an aspect of reintegration as a substantial number of our soldiers are returning home with these health problems or manifest these problems after return and find themselves in trouble as a result."

Construction has launched to double the size of the **Klamath Falls VA clinic** at 2225 N. Eldorado Ave. This clinic currently offers primary and nursing care, mental health services, and medication management for Klamath Basin veterans. Before it opened, the nearest VA medical clinic was in White City. The revamped clinic will offer expanded services upon its completion.



Faces of War Exhibit

Generously provided by Lt. Harold Bohm



Extraordinary!



Proven balance of long wear life, toughness, comfort and all season grip. The right tires for all driving applications encountered by owners of Light Trucks, SUVs and Crossovers

HUNDREDS OF TIRES TO CHOOSE FROM!



MICHELIN

BF Goodrich

BASIN TIRE SERVICE Inc.

3313 Washburn Way, Klamath Falls

541-883-8146 • www.basintireservice.com



Escanaba in Da Moonlight



A Funny Thing Happened on the Way to the Forum



Hobson's Choice



An Evening with Monty Python

Linkville Playhouse turns 50

Arts District playhouse entertains for half a century
by Nick Hill

"Good evening and welcome to the Linkville Playhouse" is the beginning of a greeting patrons usually hear over the loud speakers before each performance at The Linkville. Since 1961, Klamath Falls has been entertained by this ever-evolving group of volunteers. These actors haven't always been the Linkville Players though, and they haven't always had their playhouse.

When a group of actors started out 50 years ago, they called themselves The Klamath Civic Theater, and would perform wherever they could. Their venues ranged from The Kingsley Field Officers' Club to the Sacred Heart Auditorium to the City Library. The first official performance was of "Still Stands the House" by Canadian playwright, Gwenn Pharis Ringwood, and it was held in The Willard Hotel. Since then there have been over 250 productions.

In 1985 the group moved into 201 Main St., and became the Linkville Players in The Linkville Playhouse. Their first performance on the Linkville's stage was Archibald MacLeish's "J.B." It was directed by Ben Kerns. The Players are constantly growing and evolving. They've rebuilt the stage, expanded their backstage area as well as their lobby, they even built a "turntable" into the stage for the 2006 production of "Jekyll and Hyde."

The most remarkable thing about The Linkville Players is not what they've done or where they've come from--it's who they are. Actors, directors and stage hands volunteer their time and talent to make these plays happen. Among them are mothers, fathers, lawyers, college students, teachers and government workers who devote countless hours to make each Linkville season a unique cultural event.

The regular Linkville season begins in September each year and generally runs until May of the following year. Each season regularly consists of five productions.

The 2011-2012 season marks the 50th anniversary of The Linkville Playhouse. This season features productions of "The Importance of Being Earnest", "The Baltimore Waltz", "Spider's Web", "Amy's View" and "Sweeney Todd". Additionally, 2012 will mark the 9th anniversary of The Klamathies, an annual award show created for the volunteers of the Linkville created by Jason Tannehill.

New to the Linkville lineup this year are three productions for children. The inspiration came to current president of the Linkville, Crystal Munro, when she became a mother and suddenly found herself aware of a lack of entertainment for children in Klamath Falls. So far two children's shows have been produced, and their amazing success has guaranteed that they'll be a staple in the Linkville season. Patrons can usually expect several 'extra' productions each year that are not part of the scheduled season. These shows became popular in 2008, and include reoccurring radio shows, 2008's "Slipperace", and "It's Murder Ya Know?" staged in fall of 2011. "We hope you enjoy the show."

Buy tickets online at www.linkvilleplayers.org. For more information, contact them at (541) 884-6782 or via their Facebook at facebook.com/linkville.playhouse. Photos provided by Linkville Playhouse.

Eldorado Street (To Corina Anderson)

By Christy Soto

We were the riffraff,
born of sour stomachs,
defeated and filthy,
with running noses,
and some with addictions,
given onto the lowlands,
and sunlight, unkind.

Standing
at the end of our street,
straining against the sting,
we rose from salted pebbles.
We climbed from the cracks
between soil and cinder.
Six girls that looked like boys,
squinted from the foot
of the forbidden hill
that led to the train's trestle.

With swinging elbows
and chapped lips,
with the sun and dust
in our eyes we climbed
to reach the top.
Broken bottles protruded,
bold and fogged with the
pink of faded "Cola"
painted glass,
our scuffed shoes slipping
in the soda-stained grass.

Rocks in our shoes,
and our yellow teeth
grinding bubble gum,
we bent to breathe
and sometimes slipped,
but our blistered feet
never fell away,
beating strong,
a rhythm against the day.

Paths drawn from each journey,
we reached the summit of our
scarred mountain
and gazed out
at our broken tracks.
We stood,
six women from the Eldorado,
tall and bronzed,
Paths drawn from each journey,
we reached the summit of our
scarred mountain
and gazed out
at our broken tracks.



One Moment in Love

By Doyle French

The smell of fresh fallen rain on a cold morning
never ceases to amaze,
such as like how my shadow behind me splashes
blackened against golden sunlight upon a street.

Just when I think seasons couldn't do much more
there again I turn to see how this world changes...

The frost on my wineglass is sweet with proper time
such as a kiss from a girl who is yet so far away
yes, though, so near to my soul, my heart.

Emotions come and emotions go,
yet I know sip and sup
are one moment in love.

The coming holidays are bleakness,
a tired roundabout
that has some, yet little meaning even so.

Like rain that falls and holds my soul
or snow ascending to calm my days;
so seasons cease not to give thought
about the look in her eyes
when she sees blankets of shiny white satin
for the first time.

Yes, I know.
Winds with chill, drift and rest
are one moment in love.

Mountain Sense By Mary Theis

21

In the mountains
there is a certain serenity
that surrounds me
when I step across
the invisible threshold
between desire and acceptance.

Earthy smells are the first to greet me.
Rich deep fragrances fill my lungs
and lift my spirits with each intake;
air fresh as the first dawn.

A Stellar Jay announces my entry.
Soft mewling of a distant nuthatch
reassures me that all is okay.
Tall pines, like dear old friends,
dance in the breeze
welcoming me
with waving boughs.

Boots crunch on crisp dry leaves
as I walk up the path
that pulls me on
beckoning my thirsty curiosity
to see what wonders await me
around the next bend.

I am swept
out of my mind and
ushered into my senses.
Spinning thoughts evaporate
in the warm sunlight.

Gravity intensifies and pulls me
closer to Earth;
grounding me.
There is no past to mull over;
no future to fret over;
just nature
unfolding in front of me.

I sit in silence,
content,
listening;
heavy thoughts miles away.
I drink in the vibrant life
around me
and feel
at home.

In the Blink of an Eye by Katrina Burington

Old buildings sprout
Blooming rust and old brick
Slow footsteps sound
Scattering leaves with a flick
Meadowlarks circle on a pillar of shine
And the clouds up above move with rhythm
and rhyme.
A beautiful day, in the Klamath Basin
But on your clock, you better be tracin'
That five minutes soon, it's gonna be pourin'
Hope you brought your umbrella, and hope
you're not foreign
To the rumors of our weather--they're true.

Call for Cast and Crew:

THE END

Feature film and third production of The Creativity Collective



Premise: Endport is like many of Oregon's Pacific Coastal towns, it's eroding into the ocean. Much like the high school seniors that are staring the rest of their lives in the face, the town is a timebomb ticking. Having lost the neighboring town of Saftel, Endport is a town obsessed with the end.

Schizophrenic high school senior, Beth Luna, and her mysterious boyfriend, Adom, attempt suicide. Beth succeeds. Endport High's youth-run network, YTVE sensationalize the couple's ill-fated romance. Fed up with YTVE's "televil," Adom scrawls, "The End" on his locker.

The populars of YTVE befriend the sado-masochistic Adom in hopes of filming his demise. Succumbing to popularity, Adom stalls. The high school is overrun with star-crossed suicide mania. Kids start dropping like flies as if Beth's death poisoned the drinking water. Will Adom fall victim to the End?

If you liked *River's Edge*, *Heathers* or *Donnie Darko*, you will love *The End*!

Contact Christy Soto at christy@optiluxdesign.com or at 504-957-5820



126 S. 3rd St.
Klamath Falls, OR
541.882.8894

www.klamathlibrary.plinkit.org

10 branches to serve you throughout Klamath County.



**Your go-to place for
lifelong learning and
entertainment.**



Medical/Health

Sky Lakes Med. Center.....(541) 882-6311
 Basin Immediate Care(541) 883-2337
 Cascade E. Fam. Practice...(541) 885-6733
 Chiloquin Open Door.....(541) 783-2292
 Klamath Co. Health Dept...(541) 882-8846
 Kl. Open Door Clinic.....(541) 851-8110
 OR Health Plan & CAL-Med Accepted
 Merrill Clinic.....(541) 798-5074
 Bonanza Clinic.....(541) 545-1820
 Veterans Clinic.....(541) 273-6206
 Mon - Fri 8:00 am - 4:30 pm
 Klamath Tribal Health & Family Services:
 Klamath Falls.....(541) 882-1487
 Chiloquin.....(541) 783-3293

Emergency Services

Klamath Co. Fire Department District 1
(541) 885-2053
 Klamath Co. Fire Department District 4
(541) 884-1670
 Kl. Co. Sheriff's Office.....(541) 883-5130
 Klamath Falls City Police..(541) 883-5336
 Veterans Hall.....(541) 884-9125
 Emergency cash and food
 Klamath/Lake Co: Emergency.....9-1-1
 State Police Dispatch.....(541) 883-5711

Children/Youth

Integral Youth Services.....(541) 885-4929
 Shelter, education, jobs, advocacy,
 services for homeless children
 Klamath Co. CASA.....(541) 885-6017
 Court Appointed Special Advocate
 Pregnancy Hope Center.....(541) 883-4357
 Free Pregnancy Testing, Peer
 Counseling, Parenting Classes
 Early Childhood Intervention
(541) 883-4748
 Kl. Family Head Start.....(541) 882-5988
 Kids In The Middle(541) 883-5147
 Assistance of Kl. Basin.....(541) 883-1721
 Operation School Bell: referred by

New Resident Resource C

schools only; school supplies/clothes for
 low-income children

Counseling/Mental Health

Best Care Treatment Services In-patient
 Treatment(541) 883-2795
 Out-patient Treatment(541) 205-3459
 Kl. Co. Mental Health.....(541) 882-7291
 Kl. Youth Dev. Center.....(541) 883-1030
 Counsel services for kids; OR. Health
 Plan accepted. Slide scale
 Lutheran Community Services
(541) 883-3471
 Group and individual counseling services;
 Or Health Plan accepted and sliding scale
 Life Recovery Network....(541) 891-0071
 Drug and Alcohol Addiction, Anger
 Management, Parenting Classes,
 Life Skills Classes

NAMI (Alliance On Mental Illness)
 (541) 885-4909

Benefits/Other Assistance

DHS Self Sufficiency.....(541) 883-5511
 Food stamps, Or. Health Plan app.
 Family Support & Connections
(541) 883-5695
 Seventh-Day Adventist Church
(541) 882-2466
 Assistance with hygiene and cleaning
 supplies. In-take on Tues. 1735 Main St.
 O.R. Phone Asst. Prg (OTAP)
(800) 848-4442
 Legal Aid Services of Or....(541) 273-0533
 Various legal assistance.....(800) 480-9160
 www.oregonlawhelp.org



Seniors & People w/ Disabilities
(541) 883-5551
 Representative Payee Services
(541) 882-3500
 Social Security (SSDI, SSI, SSB)
(800) 772-1213
 Spokes Unlimited.....(541) 883-7547
 Resource center for people w/ disabilities
 Veterans Services.....(541) 883-4274
(800) 382-9296
 Disabled Am. Veterans.....(541) 884-9125
 Klamath Adult Learning Center
(541) 883-4719
 Vocational Rehabilitation Services
(541) 883-5614
 The Migrant Education Program
(541) 331-0531

Crisis

American Red Cross.....(541) 884-4125
 Natural disaster relief
 Child Welfare.....(541) 883-5570
 Report child abuse Crisis Helpline
(541) 884-0390 or (800) 452-3669
 Crisis referral services for domestic
 violence and other emergencies
 Victim Assistance.....(541) 883-5147 opt 2
 Kl. Co. Mental Health.....(541) 882-7291
 Mental health related crisis
 Salvation Army.....(541) 882-5280
 Klamath Tribes Healing Winds Hotline
(800) 524-9787
 Sky Lake Medical Center (ER)
(541) 883-6176

Utility/Weatherization

Avista(800) 227-9187
 Energy Efficiency Rebates
 Pacific Power.....(888) 221-7070
 Energy Trust of Oregon.....(866) 368-7878
 Home Energy Audit
 Klamath & Lake Community Action
 Services.....(541) 882-3500
 Low-income energy assistance
 Klamath Tribes.....(541) 783-2219
 Weatherization.....(800) 524-9787
 Salvation Army.....(541) 882-5280
 Utility assistance
 SCOEDD.....(541) 884-5593
 Wood Stove Replacement
 Sprague River Bridges Connection
(541) 891-1232
 Limited burning firewood
 United Christian Ministries (No Calls)
 In-take on the 2nd and 4th Weds. of the
 mo. 1745 Main St.

Housing Resources

Habitat for Humanity Restore
(541) 850-2173

Guide for Klamath Falls

51 Resale facility for new/used building
materials; Tuesday, Thursday,
and Saturday 9:00 am - 4:00 pm
30 Fair Housing Council of Oregon
.....800-424-3247

13 <http://fhco.org> Info. for Housing
17 Consumers: Renters, Buyers, Loan
s Applicants
'4

36 **Rental Assistance**
25 Klamath Tribes.....(541) 783-2219
Rental assistance x163.....(800) 524-9787
19 United Christian Ministries.....No Calls
In-take on the 2nd and 4th Weds. of the
14 mo. 1745 Main St.

31 **Insurance**
Great Basin Insurance.....(541) 882-5507
Webb Wilson.....(541) 884-4147
15 AAA Insurance Agency.....(541) 882-3439
Allstate.....(877) 208-0697
'0 Am. Family Insurance.....(541) 205-4511
Answer Financial.....(866) 330-5690
19 Country Financial.....(541) 884-1700
Dreyer-Petersen.....(541) 884-7101
Esurance.....(866) 341-2078
2 Fuller Tom Insurance.....(541) 884-6067
11 Grange Insurance Group....(530) 667-5656
30 Klamath Financial Group... (541) 883-7777
Mick Insurance Agency.....(541) 882-6476
Monte Johnson Insurance..(541) 850-8170

37 **Clothing Resources**
76 Hospice Thrift Shop Treasures
.....(541) 880-0596
Integral Youth Services.....(541) 885-4929
37 Clothing and school supplies
Kl. Gospel Mission.....(541) 882-4895
70 Furniture and clothing
78 The Pumpkin Patch.....(541) 850-5217
Goodwill Industries.....(541) 883-3546
Klamath Tribes Healing Winds Hotline
10(800) 524-9787
Or. Employment Depart....(541) 850-4554
19 Veteran's Only, Orlando Williams
37 Sprague River Bridges Connection
30(541) 891-1232
Wednesday 9:00 am - 1:00 pm

33 **Banks**
Chase.....(541) 882-7726
32 Premierwest Bank.....(541) 883-4980
Multiple locations
South Valley Bank & Trust (541) 273-2146
Multiple locations
State Farm Bank.....(541) 883-7000
Multiple locations
Sterling Savings Bank.....(541) 882-3444
Multiple locations
73 US Bank.....(541) 883-4611

Multiple locations
Washington Federal.....(541) 850-3183

Transportation
DAV Transports.....(541) 273-0256
DHS-SPD-Medical Transports
(888) 518-8160
Oregon Plus Packages
Dial-A-Ride.....(541) 883-2877
Transportation service for seniors and
disabled; app: www.basintransit.com
Kl. Basin Senior Citizen's Ass: Rides for
seniors and disabled.....(541) 883-7315
Klamath Tribes.....(541) 783-2219 x 174
Bus Service: (BTS).....(541) 883-2877

Shelters
Exodus House.....(541) 884-2319
Emergency shelter for teens (10-17)
K. Falls Gospel Mission....(541) 882-4895
Kl. Tribes Healing Winds, The Hotline
.....(800) 524-9787
Marta's House (Crisis Center)
.....(541) 884-0390
Shelter for women and children fleeing
domestic violence
New Beline.....(800) 850-4838

Employment
Express Personnel.....(541) 273-5000
Employment Trends.....(541) 884-1410
Labor Ready.....(541) 850-3845
Klamath Tribes Education/Employment
.....(541) 783-2219
WorkSource Klamath (Employment Dept.)
801 Oak Ave.....(541) 883-5630
www.workinginoregon.org (website)



Hotels
Quality Inn.....(541) 882-4666
Econolodge.....(541) 884-7735
Majestic Inn(541) 883-7771
Super-8 Motel(541) 884-0235
Wild Goose.....(541) 798-5826

Food Resources
Integral Youth Services.....(541) 882-2053
Sack lunch available during the
summer at multiple sites
Kl. Basin Senior Citizen's Assoc. Meals
on Wheels & on-site.....(541) 883-7171
Klamath Gospel Mission....(541) 882-4895

Pharmacy
Balin's Tower and Drug....(541) 884-1347
Bi-Mart Pharmacy.....(541) 882-7714
Campus Drug.....(541) 883-1147
Fred Meyer.....(541) 884-1780
Rite Aid.....(541) 883-2210
Safeway.....(541) 273-3515
Multiple Locations

Brought to you by the
Klamath & Lake
Community Action Partnership

(541) 882-3500
1803 Main St Klamath Falls,
OR 97601
www.klcas.org



Exploring the Outdoors in the Klamath Basin

by Answer People

Welcome to the greater Klamath Basin... simply put, you've arrived at the outdoor recreation paradise on earth!

Here's a TINY sample of the free year-round activities that us locals know about -- enjoy!

Winter: Tropics of winter sports! (Dec - April)

- Snowshoeing, cross-country skiing, downhill skiing (Warner Canyon)
- Snowmobiling (powder rivals anywhere in the West)
- Cut your own Christmas tree, raptors and bald eagle viewing

Spring: Best in the West! (April - July)

- Birding
- Mushrooming -- morels, boletas, shaggy manes

Summer: Long Days, Cool Nights (June - Sept)

- Camping, horse packing and trail riding
- Swimming, fishing (fly and bait), canoeing
- Bicycling, Hiking, ATV riding

Fall: Incredible Colors, No Crowds! (Sept - Dec.)

- Hiking, mushrooming, berry picking (elderberry, huckleberry, wild strawberry)
- Hunting -- waterfowl, upland, big game...
 - Fall foliage -- Westside Road, Williamson River, Keno outback, Wood River Valley...

DIAMOND "S" MEAT CO.
EST. 1997

Locally owned & operated by the Robnett Family

We specialize in curing **WITHOUT** chemical nitrites and our meats are gluten free!

Featuring Rib Eyes • Chuck Eyes
Tri-Tips • Flat Irons
Pork Loin • Chicken.
Ground Beef *And More!*

Snack Sticks, Jerky's & Salami's

Hours:
8am-6pm Mon.- Fri. & 9am-1pm Sat.

Map:
Klamath Falls, KCC, Lakeview, Hwy 140, Hwy 39, Kings Way, Diamond "S" Meat Co., Merrill, Hwy 140, Homedale Rd.

541-884-8767
7400 Kings Way
Klamath Falls, OR, 97603



Bike Path over "A" Canal

Year-round: Explore paradise!

- Historical monuments, museums
- Gem-quality sunstones and other rockhound activities
- Trails, parks, wetlands, wildlife refuges

More Info: Fremont-Winema National Forest, 541-883-6714, www.fs.usda.gov/fremont-winema/ Oregon Dept. of Forestry, 541-883- 5681, <http://tinyurl.com/klamathlakeodf> -- K. Falls City Parks, 541-883-5351, <http://ci.klamath-falls.or.us/departments/parks> -- Bureau of Land Management, 541-883-6916, www.blm.gov/or/districts/lakeview/ -- <http://ThingsToDoNearCraterLake.com>



Information provided by Answer People -- a long-standing networking group encompassing members from Klamath/Lake/Modoc counties. We inspire, promote and celebrate great customer service through information sharing. Please join us at facebook.com/AnswerPeople

Deer sightings near Klamath Lake

Underwater Videography

The Video Art of Dr. Dan Benson
by Terra Whitlock

25

With a mysterious air and heady scenes shot deep under the Pacific, "Bilikiki Fantasy: Lost Treasure of the Solomons" takes the viewer through a thorough, if tongue in cheek, tour of the sea life that inhabits the waters around the Solomon Islands, west of Papua New Guinea. With crystal clarity and a scientist's attention to detail, underwater videographer Dan Benson brings the world of the scuba diver to the landlocked viewer.

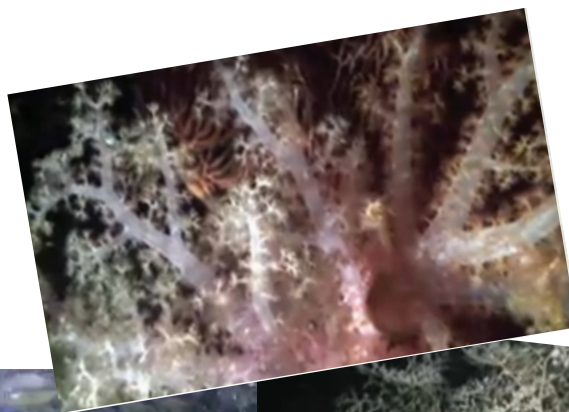
Exploring the waters surrounding a sunken World War II ship, Benson and his crew document deep water scenes of canyons teeming with life. Deep between rocky cliffs alien creatures greet divers. A lacy plantlike structure slowly unfurls, illuminated by the photographer's lights and silhouetted against an inky backdrop of shadowy water. A sea snake glides among rocks and anemones, searching for food in miniature caves. Shimmering light falls through water and sparkles on rocks and rock look-alikes, creatures hiding at the ocean floor in camouflage. All this is brought to the viewer with beautifully lit and smoothly cut footage.

Benson, a Klamath Falls ophthalmologist, has been travelling the world shooting these underwater scenes for the past eight years. His interest grew out of a love of photography that he shares with his wife. While on vacations, she would explore the environment with a 35mm camera; not wanting to risk creating a competitive atmosphere, Benson investigated videography instead. Combining this with his love of scuba diving, Benson began travelling to tropical locales to film his dives. To date, he has filmed in places such as the Red Sea, the Philippines, Fiji, and Hawaii.

"Diving," says Benson "has to be something that's second nature." Each trip lasts two to three weeks, with at least four dives per day. It's an intensive schedule, but it gets results. The technical considerations of undersea videography are many; the deeper you go, the less color remains to capture. Missing colors are supplemented artificially with lights. Benson often makes his own gels to customize the color necessary for the scene to show up correctly on video. Creatures camouflage themselves and hide, so "you light it so that the object of interest is set away from its background." Changing depth of focus isolates an image against the water.

These techniques occupy Benson as he dives and searches out subjects. All adjustments and refinements in the shooting process are performed as the subjects swim away and the light changes, making for constantly changing, challenging, and inspiring projects.

PASSION
LAB



*Underwater
Explorations*

Frontier Trailer Sales

Come and meet our friendly staff!



Horse Trailers

Stock Trailers

Campers

Rental

Utility Trailers

Used Inventory

Aluminum Trailers

Steel Flatbed Trailers

Cab Over Campers

Camp Trailers

Parts & Service

Snowmobile Trailers

Accessories

Bumpers

Canopies

Hitches

Contractor Racks

Camping Supplies

RV Storage

Propane

RV Repair

ATV Trailers

5013 Washburn Way, Klamath Falls, OR

(541) 883-2003

www.frontier-trailersales.com



**FISHER
NICHOLSON
REALTORS, LLC**

fnrhomes.com/donromano or fnrhomes.com/sharrolromano

"Level the Playing Field."

Don Romano: 541-891-9441
Licensed Broker

Sharrol Romano: 541-891-7000
Licensed Broker



Mia & Pia's Pizzeria & Brewhouse

3545 Summers Ln.
Klamath Falls, OR
(541) 884-4880
www.miapia.com

Family Friendly • In/Outdoor Dining • Banquet Room • Open Mic, Trivia & Special Events
13 handcrafted brews on tap at "Klamath country's favorite brew pub."

Terror comes to Kiger for the 2nd Field of Screams!

In 2011, Klamath Falls' minor league baseball team, The Gems and The Creativity Collective hosted a six-night "Field of Screams" haunted house at Kiger Stadium. "The Field of Screams was a blast, from start to finish," said Chuck Heeman, General Manager of the Gems. "Watching the Creativity Collective put in the hours of work that nobody saw, and watching how excited they were to put on such a great show, was really a tremendous experience. Seeing young people who could easily be going down a different path, working so positively toward this event, was very rewarding. I can't wait to see how much we can grow the Field of Screams for next year!"

Field of Screams 2012 will be The Collective's fourth consecutive haunted house. Previous years were billed as mature audience only. "It was nice to add the kids house in 2011 – plus it was fun working with The Gems on this one," remarks Christy Soto, the Executive Director of The Creativity Collective. "After being responsible for the whole process for several years, it was wonderful having such a natural partnership. They really had our backs with very patient support." The Gems also extended additional advertising to promote the event.

Previous years' rooms had names like "Nightmare Doll House," and "Doctor Carnage." In 2011, there were nearly 20 rooms. The final room was the "Zombie Gems," blood thirsty ball-playing undead. Most people left the adult house in a full run. More than one teenage boy peed his pants.

The 2011 Field of Screams had several guides from the Chamber of Commerce ambassadors organization. Additionally, several actors from Medford came over the hill to act in the most intense haunted house experience in Southern Oregon. "There are real children in there," was heard by out-of-breath patrons. Attendees couldn't believe that there were several children acting in the adult house. The kids of The Collective were excited to be in the house with or without their parents after being part of the planning process for over six months.

Keep an eye out for 2012 on the Gems and Collective's site www.creativitycollective.com and www.klamath-fallsgems.com.

The Collective is seeking actors and staff for the 2012 Field of Screams. Call Christy Soto 504-957-5820 to get involved!



Dedicated to the Life of an Idea

27



The Creativity Collective launched in 2008 to provide arts resources, networking, education, and partnerships for artists and art enthusiasts. The group of committees took the name to represent an artistic workforce

of creative thinkers with a

community focus of growing creative and cultural arts forums. The Creativity Collective's projects outgrew the homes and offices of its members within a year. Their flagship high-school documentary: KU STORIES was gaining momentum. The Creativity Collective had just developed their website and was in the process of developing their arts and entertainment travel magazine, The Artisan's Almanac, when they were approached to take over an art loft on Main Street.

The organization moved into the 6000 square foot upstairs building at 809 Main Street in Klamath Falls and dubbed it the Contemporary Arts Kitchen (CAK) in 2009. It was a place for artists of all ages to learn and to create and exhibit art. CAK included dance classes, film projects, gallery shows, music events, and more. The public was invited as spectators and participants.

The building had no heat and was graffitied. The Collective sought donations of paint and supplies and met weekly to have cleaning and painting parties. Hundreds of hours and equal amounts of money were invested to make CAK at 809 Main St. presentable. The group sought a business license and was denied--the Creativity Collective would have to cease all live music shows, the sustaining source of their income. Over the next several months, more provisions were put on the operations at CAK. The Collective, the building's owner, and the licensing entities met to discuss a game-plan that would allow CAK and all of its programming to stay at



809 Main. An internal fire-escape would need to be build to code. The electrical systems would need to be upgraded. There would have to be upgrades on the doors and exits posted. Coincidentally, the

ground-floor address, 811 Main, just beneath CAK, was coming available. They could keep their classes, offices, and casting agency upstairs and move their gigs, plays, films and café downstairs. They acquired the additional 4000 square feet at 811

Main in 2010. Substantial building renovations presented themselves almost immediately. After a year and a half battle, The Collective decided to let the buildings go. Despite building issues, the Collective launched the Artisan's Almanac in Winter of 2010. They received kudos for their teen-programming and for their low-cost art events. They produced an original play and hosted several events in the Snowflake Festival.

CAK was in essence just another project of the Creativity Collective. A lot of focus was placed on bringing the inexpensive all-ages art center to downtown—a place that distracted youth from negative influences.

The Collective took their victories and lessons learned and focused their programming into other venues. The Collective joined forces with

The Gems to continue their haunted

house tradition. They moved their gallery shows and women's networking into the Klamath Co. Library. The group took their first retreat to Burning Man artist community. The organization started a campaign to highlight the Main/East Main area of Klamath as an art district with an art walk and treasure hunt called Artventure.

Their documentary, KU STORIES premiered in the summer of 2011. In the Winter, they received a grant for Artventure.

The Collective received inquiries from other communities interested in growing the organization in their town. Additionally, members who were relocating were passionate about expanding satellite Collectives, growing the network of artists and adding the benefit of a larger marketplace.

For more info:
www.creativitycollective.com and
www.facebook.com/artskitchen



**Historic Kiger Stadium
2001 Crest St.
Klamath Falls, OR**



(541) 883-GEMS
klamathfallsgems.com
facebook.com/klamathfallsgems

2012 Home Schedule:

June 1: Friday, Bend Elks; 7:05 p.m.
June 2: Saturday, Bend Elks; 7:05 p.m.
June 3: Sunday, Medford RiverDawgs; 6:05 p.m.

June 13: Wednesday, Wnatchee AppleSox; 7:05 p.m.
June 14: Thursday, Wenatchee AppleSox; 7:05 p.m.
June 15: Friday, Wenatchee AppleSox; 7:05 p.m.

June 16: Saturday, Central Oregon Bucks; 7:05 p.m.
June 17: Sunday, Central Oregon Bucks; 1:05 p.m.

June 18: Monday, Bellingham Bells; 7:05 p.m.
June 19: Tuesday, Bellingham Bells; 7:05 p.m.
June 20: Wednesday, Bellingham Bells; 7:05 p.m.

June 26: Tuesday, Cowlitz Black Bears; 7:05 p.m.
June 27: Wednesday, Cowlitz Black Bears; 7:05 p.m.
June 28: Thursday, Cowlitz Black Bears; 7:05 p.m.

June 29: Friday, Kelowna Falcons; 7:05 p.m.
June 30: Saturday, Kelowna Falcons; 7:05 p.m.
July 1: Sunday, Kelowna Falcons; 6:05 p.m.

July 3: Tuesday, Redding Colt .45s; 7:05 p.m.
July 4: Wednesday, Redding Colt .45s; 1:05 p.m.

July 13: Friday, Walla Walla Sweets; 7:05 p.m.
July 14: Saturday, Walla Walla Sweets; 7:05 p.m.
July 15: Sunday, Walla Walla Sweets; 6:05 p.m.

July 16: Monday, Kitsap BlueJackets; 7:05 p.m.
July 17: Tuesday, Kitsap BlueJackets; 7:05 p.m.
July 18: Wednesday, Kitsap BlueJackets; 7:05 p.m.
July 19: Thursday, Kitsap BlueJackets; 7:05 p.m.

August 1: Wednesday, Black Sox; 7:05 p.m.

August 4: Saturday, Bend Elks; 7:05 p.m.
August 5: Sunday, Bend Elks; 6:05 p.m.

August 6: Monday, Corvallis Knights; 7:05 p.m.
August 7: Tuesday, Corvallis Knights; 7:05 p.m.
August 8: Wednesday, Corvallis Knights; 7:05 p.m.
August 9: Thursday, Corvallis Knights; 7:05 p.m.

2012 Weekly Events:

Every Wednesday
The Sports Legend Family Value Night;
\$2 Hotdogs, Nachos, small Pepsi, or draft beer.

Every Thursday
Thirsty Thursday;
\$2 large Pepsi and Budweiser draft products

Every Friday
Give-a-way Night;
Freebies from local business sponsors!

Every Saturday
Legacy Furniture's Recliner Raffle;
Win one of two brand new recliners **AND** help raise funds to feed the hungry of the Klamath Basin.



Join Tater's Tots Kid's Club:
go to www.klamathfallsgems.com to find out how!

